

1 " IMPACT WRENCH

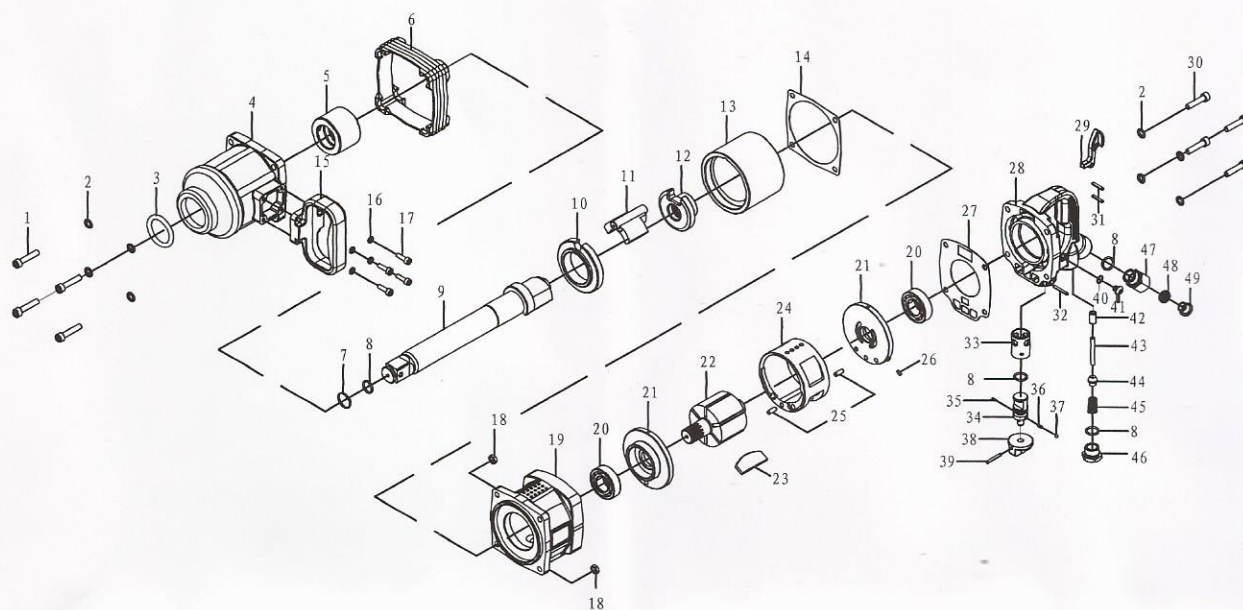
1 " PIN-LESS HAMMER AIR IMPACT WRENCH

Replacement Parts List

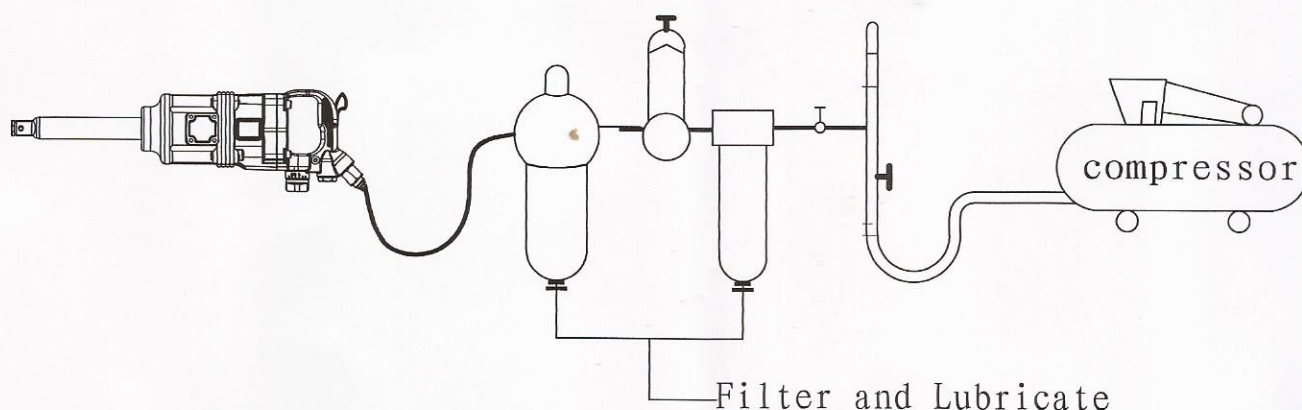
Professional duty

Square Drive.....1" (25.4mm)
 Rated No Load Speed.....4200r.p.m
 Maximum Torque.....2180N-m

Capacity Bolt Dia.....41mm
 Air Pressure.....8-12kg/cm²
 Net Weight.....14Kg



Item NO.	Description	Qty	Item NO.	Description	Qty
1	Screw	4	26	Elastic Cylindrical Pin	1
2	Spring washer	8	27	Handle Gasket	1
3	O Ring	1	28	Handle	1
4	Front housing	1	29	Trigger	1
5	Oil sleeve	1	30	Screw	4
6	Protecting Jacket	1	31	Elastic Cylindrical Pin	2
7	Axis Protection Ring	1	32	Elastic Cylindrical Pin	1
8	O Ring	4	33	Speed Control Valve Cover	1
9	Axis	1	34	Speed Control Valve	1
10	Hammer frame lid	1	35	Elastic Cylindrical Pin	1
11	Hammer	1	36	Speed Control Valve Spring	1
12	Drive cam	1	37	Steel ball	1
13	Hammer Frame Lid	1	38	Speed Control Valve Knob	1
14	Front cover gasket	1	39	Elastic Cylindrical Pin	1
15	D Handle	1	40	O Ring	1
16	Spring washer	4	41	Inner Hexagon Screw	1
17	Screw	4	42	Copper bush	1
18	Hexagonal nut	4	43	Knock-out Pin	1
19	Housing	1	44	Throttle valve	1
20	Bearing	2	45	Air Inlet Spring	1
21	Front Cylinder Cover	2	46	Air Inlet Spring Pedestal	1
22	Rotor	1	47	Air Inlet	1
23	Blade	6	48	Filter Net	1
24	Cylinder	1	49	Dust Cap	1
25	Elastic Cylindrical Pin	2			



Safety Regulations/Operation instruction

This Brand Pneumatic Spanner is made of wear-resistant and shockproof materials under excellent design and strict quality control. Notes to the users before operating:

1. Before each shift, lubricate the tool with 3-5 drops of engine oil through air inlet. Don't add the oil with big viscosity, and keep the tool running idly for 1-2 seconds. Otherwise it will reduce the force of air motor.
2. Keep dry and clean of air cylinder and gas container, and be sure that the air supply tube shall not be air leakage.
3. Check to see if the air gauge is at 10KG before use it, safety standard level within 6-8KG of working pressure.
4. In order to keep normal operation of this unit, be sure to fill in the air and water from air outlet of air cylinder, filter, and auto oil filler combination.
5. If no oil filter, please fill oil in according to the assigned oil port. Fill oil in before working to keep the best performance function of this unit.
(Please use of recommended oil or spindle oil for pneumatic spanner.)
6. If this unit keeps still without running or runs not smoothly, please use of large capacity of special recommended oil or spindle oil to fill in for pneumatic spanner turning. Remove and clean away the dirt and obstacles. If they are unable to be removed after continuous twice or three times, please send them to the dealer for repair or maintenance.
7. In order to protect the tools and extend service life we advise that 3-point combination and air-drying machine should be fixed in pipeline of air compressors.
8. Clean those tools which haven't been used for over half a year and seal them properly with oil.
9. Please put on safety protective glasses when operate.